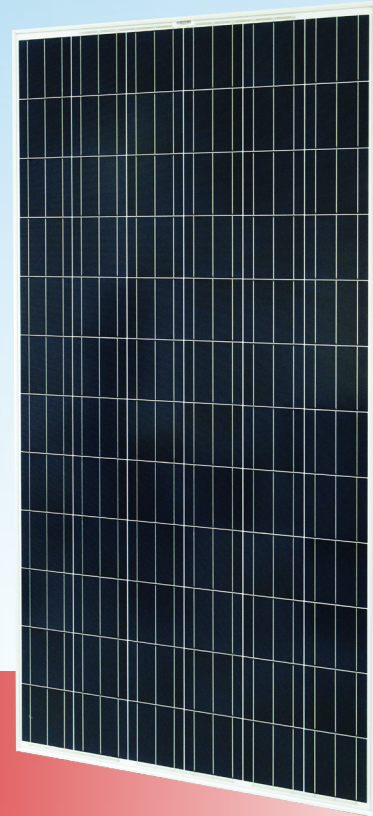




**Solartech**  
Energy Corp.

290W-310W

Maximize solar return with  
Solartech  
High Performance Modules



### ASC-6P-72-3BB Series

Multi-Crystalline Photovoltaic Modules

Maximize peak output with pre-sorted high quality 6" multi-crystalline cells

Ensure 5400pa snow loads and 2400pa wind loads with high transparent tempered glass and robust anodized aluminum frame

Commit protection in the severest weather conditions with certified EVA, Back sheet foil, and Junction box

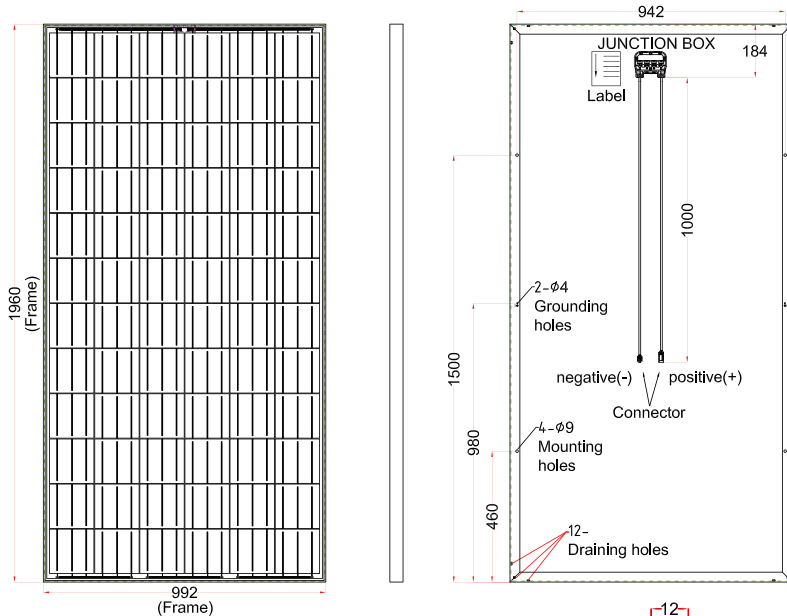
10-year limited product warranty, 25-year limited power output warranty (90% for 10 years, 80% for 25 years)



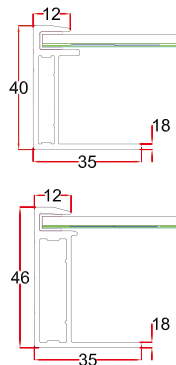
# ASC-6P-72-3BB Series 290W-310W

## Multi-Crystalline Photovoltaic Modules

### Mechanical Data

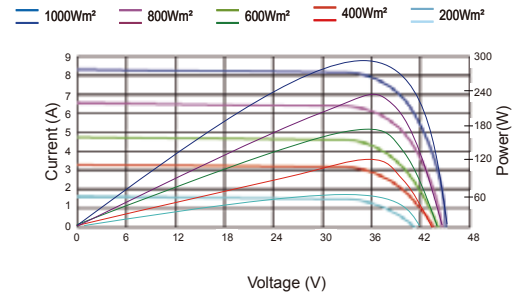


Dimension: 1960mm x 992mm x 40mm(46mm)  
 Cells: 72 polycrystalline 156x156mm cells  
 Connection: Junction box IP65 with 3 bypass diodes  
 Cable: 4mm<sup>2</sup>x1.0m with Tyco or MC4 compatible connectors  
 Frame: Anodized aluminum  
 Weight: 40mm :23 kg / 50.66 lbs  
 46mm : 23.5 kg / 51.76 lbs



### IV Curve

IV and Pmax Curves with different radiation levels at 25°C



### Temperature Coefficient

Temp. Coeff. of Isc = 0.065%/K  
 Temp. Coeff. of Voc = -0.35%/K  
 Temp. Coeff. of Pmax = -0.477%/K

### Maximum Operation

Operational Temperature: -40°C to +85°C  
 (-40°F to +185°F)  
 Maximum System voltage: 1000V DC  
 Maximum Reverse Current: 15A  
 Maximum Load: Snow loads 5400pa or 550kg/m2  
 Wind loads 2400pa

### Electrical Characteristics @ STC\*

Module Number	ASC-6P-72-290-3BB	ASC-6P-72-295-3BB	ASC-6P-72-300-3BB	ASC-6P-72-305-3BB	ASC-6P-72-310-3BB
Nominal Power Pmax[Wp]	290	295	300	305	310
Power Tolerance **	+3%	+3%	+3%	+3%	+3%
Nominal Voltage Vmax[V]	36.18	36.38	36.52	36.85	37.30
Nominal Current Imax[A]	8.02	8.10	8.21	8.27	8.31
Open Circuit Voc[V]	44.46	44.68	44.82	44.96	45.18
Short Circuit Isc [A]	8.52	8.58	8.63	8.67	8.70
Efficiency Eff [%]	14.92	15.17	15.43	15.69	15.94

\*STC: Standard Test Conditions, measurement at radiation strength 1,000 W/m<sup>2</sup>, spectral distribution AM 1.5, temperature 25°C, in accordance with EN 60904-3

\*\*Power tolerance can be adjusted on requests

NOCT: Nominal Operating Cell Temperature, 45.8 +/- 2°C, measurement at radiation strength 800 W/m<sup>2</sup>, AM 1.5, Air temperature 20°C, wind speed 1m/s

Specifications are subject to change without notice

### Warranty

10 year limited product workmanship warranty

25 year limited power output warranty: 90% minimum rated power for 10 years. 80% minimum rated power for 25 years

Solartech Energy Corp.

Taipei Office  
 8F., No.760, Sec. 4, Bade Rd., Songshan Dist., Taipei City 105, Taiwan  
 Tel: +886-2-21712388 Fax: +886-2-21712387 E-mail: sales@solartech-energy.com

Hsinchu HQ & Fab  
 No. 16, Guangfu N. Rd., Hsinchu Industrial Park, Hukou, Hsinchu 303, Taiwan  
 Tel: +886-3-5276888 Fax: +886-3-5246866